

LARCHWOOD SHORT BREAK UNIT STATEMENT OF PURPOSE 2017



This document fulfils the requirements of the Children's Homes (England) Regulations 2015 Schedule 1, and the Department for Education Guide to the Children's Homes Regulations including the quality standards April 2015.

TABLE OF CONTENTS

	Page number
INTRODUCTION	4
QUALITY AND PURPOSE OF CARE	
• Statement of the range of needs	4
• Ethos of the home	4
• Accommodation offered	4
• Location of the home	5
• Arrangements for supporting the cultural, linguistic and religious needs of children	5
• Complaints	5
• Access to the home's child protection and behaviour management policies	6

VIEW'S WISHES AND FEELINGS	
• Consulting with Children and Young People	7
• The home's policy and approach to anti discriminatory practice and children's rights	7

EDUCATION	
• Supporting children with special educational needs	9
• Supporting education and educational achievements	9

ENJOYMENT AND ACHIEVEMENT	
<ul style="list-style-type: none"> • Activities within the home 	10

HEALTH	
<ul style="list-style-type: none"> • Health care provided within the home 	10

POSITIVE RELATIONSHIPS	
<ul style="list-style-type: none"> • Promoting contact between children, families and friends 	11

PROTECTION OF CHILDREN	
<ul style="list-style-type: none"> • Approach to monitoring and surveillance 	11
<ul style="list-style-type: none"> • Behavioural support 	12

LEADERSHIP AND MANAGEMENT	
<ul style="list-style-type: none"> • Managers' details 	13
<ul style="list-style-type: none"> • Staff experience and qualifications 	14
<ul style="list-style-type: none"> • Staffing structure 	15
<ul style="list-style-type: none"> • Promoting appropriate role models within the home 	17

CARE PLANNING	
<ul style="list-style-type: none"> • Admission to the home 	17

1 INTRODUCTION

- 1.1 The statement of purpose is a requirement of the Children's Homes (England) Regulations, April 2015. The statement is intended to provide a guide to Larchwood Short Break Unit for professionals, the public, Elected Members and external organisations.
- 1.2 This is a key document against which the unit is inspected by Ofsted, and is formally reviewed and approved by the Executive Member and the Director for Children, Young People and Learning on an annual basis

2 QUALITY AND PURPOSE OF CARE

Statement of the range of needs

- 2.1 Larchwood is a short break unit, providing respite care for children with a range of complex needs who have a learning and/or physical disability. The children and young people who access Larchwood require personal care, medication, behavioural management and support with learning and achievements.

Ethos of the home

- 2.2 Our ethos within Larchwood is to make a positive difference to the personal, social and learning lives of the children and young people who attend. We strive to create a positive environment which promotes a 'friendship matters' culture, and where children and young people are offered experiences and opportunities to assist them with achieving their aspirations, and goals in life,
- 2.3 Children and young people are supported through a multi-agency approach to aspire to the continuous development of knowledge, understanding and skills, whilst being safe, socialising with friends and having fun. Larchwood adopts a holistic, person centred approach to the care and development of children and young people and endeavours to ensure that they are enabled to overcome barriers, whatever and wherever these may be.

Accommodation offered

- 2.4 Larchwood is a purpose built resource that has been in existence since 1977 and has evolved over the years to meet the changing needs of children with disabilities and their families. The accommodation is all on the ground floor and there is appropriate access to all areas.
- 2.5 Facilities within the unit include an adapted bath, fixed and mobile hoisting equipment, a sensory room and fully accessible gardens which include specialist sensory and play equipment.
- 2.6 Larchwood provides weekend overnights, weekday overnights, school holiday day care, after-school care, and social community based activities for children and young

people. Larchwood is registered for children of both genders aged 5 and over, up to their 18th birthday.

- 2.7 Larchwood is registered with Ofsted a 5 bedded unit, and can accommodate a maximum of five children or young people overnight. In addition, the unit offers services to other children and young people for after school visits, day care or community based activities.

Location of the home

- 2.8 The unit is based in Bracknell, Berkshire and is situated in a quiet residential area close to the town centre, local leisure resources and facilities. In close proximity to the home there are two supported living houses which accommodate adults with learning disabilities, offices which accommodate council employees and a child protection suite, a number of private residential homes, and above the unit are four flats that provide temporary housing for families. The location of the unit has been formally assessed and there are no known significant risks in regard to location.

Arrangement for supporting the cultural, linguistic and religious needs of children

- 2.9 We strive to be inclusive and sensitive to the individual needs and aspirations of children, young people and their families. We also aim to be family orientated, and culturally competent, respectful of children and young people who have a diverse range of needs and backgrounds. All the children/young people who receive a service from Larchwood are valued as individuals, with different needs and individual rights.
- 2.10 The values deriving from different backgrounds are recognised and respected at all times. Within the care planning process the team recognise different need in relation to ethnicity, culture, religion, diet and sexual orientation where they may exist.
- 2.11 Within the unit there are a number of resources which recognise ethnic, cultural and linguistic differences, and support workers enable the children and young people to explore these through play. They include books, posters, toy figures, games, multi cultural music and cultural evenings. Support workers encourage children/young people to question and celebrate differences, through activities, role modelling and discussions.
- 2.12 Being part of Bracknell Forest Council, Larchwood have access to services that can provide translation of documents in other languages, braille and audio, and interpreters to attend reviews or meetings where necessary.
- 2.13 Special dietary needs and individual preferences are recognised, and are included in the menu planning process.

Complaints

- 2.14 Complaints are dealt with at the earliest opportunity and by the most appropriate person in accordance with Bracknell Forest Council's complaints procedure, copies of which are available in the reception area of the unit, or on the Bracknell Forest Council website.

- 2.15 Within Larchwood we have developed various ways in which our children and young people can make formal and informal comments, observations, or complaints. These include;
- An accessible Children's Guide found at the entrance to the unit, which includes information on how to make a complaint and where to find support in doing so.
 - A posting box system that is freely used within the lounge area, with a range of tools such as symbols and tick boxes to ensure varying levels of communication are catered for.
 - A children and young person's consultation form, which children are supported to complete before their reviews.
 - Children are also visited regularly by their Social Workers which offers a further independent opportunity to feedback in regards to the service they receive.
 - Consultation board in the entrance hall affording opportunities to communication with the use of PECS, pictures and or switch buttons.
 - A visual book for staff to record from observations of non verbal children and young people's unhappiness, worries, and or complaints.
- 2.16 Larchwood is committed to receiving and acting upon feedback from service users, whether this is positive or indicating dissatisfaction with the services provided. Complaints and compliments are monitored by the Regulation 44 visits each month, and by the Complaints Manager.
- 2.17 The unit has a separate telephone line for children and young people to access should they wish to complain directly to the Complaints Manager, or to the Head of Service.

Children and their families are also able to make a complaint to Ofsted or to the Children's Commissioner for England, Anne Longfield (appointed March 2015) at:
Office of the Children's Commissioner
0800 528 0731

advice.team@childrenscommissioner.gsi.gov.uk

Or

Ofsted
Piccadilly Gate
Store Street
Manchester
M1 2WD
0300 1231231
enquiries@ofsted.gov.uk

[Access to the home's child protection and behaviour management policies](#)

- 2.18 Larchwood adheres to the Berkshire LSCB Child Protection Procedures, a 'live' online document which can be found at:
<http://proceduresonline.com/berks/>

Larchwood have also completed their own internal Section 11, Children Act 2014 audit in 2016

- 2.19 Alongside this Larchwood also has an approved bespoke safeguarding policy, which includes an easy to follow flow chart. This policy is available to staff as a paper document in the policies and procedures folder, on a shared computer drive and available to children, young people, families, carers, professionals and others involved in the care and protection of a child upon request.
- 2.20 Larchwood also has a Behaviour Management Policy, available in the above formats and upon request.

3 VIEWS, WISHES AND FEELINGS

Consulting with Children and Young People

- 3.1 Regular consultation takes place with children and young people regarding their experience of Larchwood and how they would like the service to develop. Larchwood recognises that children and young people should be offered opportunities, choice and control at every appropriate opportunity.
- 3.2 Consultation is part of our everyday work however the below illustrates some of the other methods we use. :
- The 'Larchwood Lions' -This is Larchwood's participation group, providing feedback to the management team about the unit on a regular basis.
 - Interactive consultation board with varying topics
 - Post box system, user friendly informal way to ascertain views
 - Choices in the meals provided
 - Children's consultation booklet
 - Direct observations from staff
 - Analysis of behavioural incidents
 - Annual children's consultation forms
 - Feedback from parents/carers and other involved professionals

The children and young people at Larchwood are also encouraged to attend the newly developed Council for Children with Disabilities – BOOM (Because Our Opinions Matter) to provide an opportunity to share their views about the unit and the wider services they receive.

The home's policy and approach to anti discriminatory practice and children's rights

- 3.3 Larchwood works within the Equality Act 2010. This act protects people in the workplace and in wider society from discrimination. Discrimination can come in any of the following forms:
- Direct discrimination- treating someone with a protected characteristic less favourably than others

- Indirect discrimination – putting rules or arrangements in place that apply to everyone, but that put someone with a protected characteristic at an unfair disadvantage
- Harassment – unwanted behaviour linked to a protected characteristic that violates someone's dignity or creates an offensive environment for them.
- Victimisation – treating someone unfairly because they've complained about discrimination or harassment.

Protected characteristics are described as:

- Age
- Being or becoming a transsexual person
- Being married or in a civil partnership
- Being pregnant or having a child
- Disability
- Race including colour, nationality, ethnic or national origin
- Religion, belief or lack of religion/belief
- Sex
- Sexual orientation

3.4 Larchwood has a policy on anti-discriminatory practice that all staff adhere to. No child or groups of children or their families will be discriminated against. Our staff team will not judge or treat children at Larchwood or their family unfairly or unequally.

3.5 Should staff become aware that an individual or a family is experiencing discrimination they will offer immediate support and promptly address the needs of all concerned. This will then be passed on to the Unit Manager to investigate or raised further as necessary.

3.6 Anti-discriminatory measures in place to protect children and their families include:

- Careful observation and monitoring
- Accurate case recording
- Being vigilant in the link worker role
- Having an understanding of the families' needs
- Being aware of the signs and symptoms
- Raising concerns with others

3.7 Bracknell Forest Council and Larchwood are committed to the principles of The Human Rights Act 1998. Children with disabilities are vulnerable. Their needs and interests must be heard and given the utmost consideration in decision making. Larchwood use every opportunity to promote the rights of children with disabilities and to improve children's lives and social status.

3.8 Within the principle of equal opportunities, all young people have rights. At Larchwood children and young people have the right to:

- Be treated with respect
- Be treated fairly
- Be listened to when people are making plans about their future
- Be able to go to school
- Be in good health
- Be able to complain if they are unhappy or worried about something

- Be able to have an advocate who can advise and help sort out matters when their stay is not going well
- Be looked after by staff who actively promote the above rights

3.9 The concept of the 'best interests' of the child is paramount in the values of Larchwood. The unit is committed to promoting the rights of children with disabilities and ensuring they are able to make a meaningful contribution and achieve their aspirations. Children and young people are involved in decision making and planning about their care and wider service developments. Inclusion is achieved by accessing mainstream activities such as going to the cinema, meals out in restaurants, and youth clubs in the community.

4 EDUCATION

Supporting children with special educational needs

4.1 Children/young people during their stay at Larchwood continue to attend school as part of their daily routine. School transport will be consistent with that at home to ensure continuity. Children's escorts have a good relationship with staff in the unit and ensure that any communication from school or home is fluent to staff.

4.2 Schools attended in the local area include:-

- Kennel Lane School (Bracknell)
- Manor Green (Maidenhead)
- Addington School (Lower Earley)
- Heathermount (Ascot)

4.3 Some families of Children and Young People have a home/ school/ Larchwood diary to help ensure a consistency of care between all carers and to enable information sharing. This enables support workers to gain an insight into the child or young person's day and help to reinforce and praise events and achievements that day/week. There is always close liaison between Larchwood, families and school.

4.4 The importance of education is acknowledged. If children and young people bring homework into the unit to complete, support workers assist with this where necessary and they are encouraged to complete tasks. There is a wide range of books available in the unit, three iPads, a large touch screen television with a wide range of applications, games, toys, art activities, and opportunities for shopping and cooking amongst many other opportunities

Supporting education and educational achievements

4.5 Larchwood staff attend school reviews and make visits to the schools to see their link children. The link worker will maintain good contact, and work together with the teacher and young person to plan their smart star achievements in line with those educational targets set at school. There is an achievement rewards box at Larchwood in which children and young people can choose an item when they have reached or made good progress in working towards their goal ladders. We also recognise and celebrate achievements through the use of our 'WOW' board which is displayed in the dining area.

- 4.6 The Unit Manager meets termly with a member of the school staff to identify areas of concern or improvement with either individual young people or services, and attends the professional liaison meetings held at Kennel Lane School when required.

5 ENJOYMENT AND ACHIEVEMENT

Activities within the home include:-

- 5.1 An extensive variety of activities which take into account a young person's individual likes, choices, needs and aspirations. The provision of play equipment and outings is a key aspect of the service. A wide range of play activities are provided, these include, up to date I.T systems (iPads), art, games, puzzles, sensory toys. The indoor sensory room provides a space for children and young people to enjoy a range of sensory activities in a calm and relaxing environment.
- 5.2 A safe and secure garden which provides opportunities for enjoyment with specialist outdoor play equipment such as a wheel chair accessible swing, water play, trampoline and climbing frame with slide.
- 5.3 Access to a mini bus and drivers, which are used to provide a variety of outings such as trips to the coast and enable the children/young people to access local community facilities.
- 5.4 An 'On the Move' service for children or young people where there is an assessed need to have the opportunity to access and enjoy the local community either alone or with their peers with appropriate support. This is particularly valuable to young people approaching adulthood.
- 5.5 A teenage group, that meets fortnightly to have an independent cooking session. This involves decision making, team work, shopping for ingredients, preparing and cooking the main meal for the evening.
- 5.6 Overall the unit works to ensure continuity of care delivery and consistency within the peer group settings to promote social interaction and friendships.

6 HEALTH

Health care provided within the home

- 6.1 The unit is able to provide services for, and assist children/young people who have a range of additional health problems. These include epilepsy, asthma, eczema and gastrostomy feeding. Supporting individual children's health is covered within the child/young person's care plan, and emergency procedures are in place if necessary.
- 6.2 Our local community nursing team delivers specific care plan training for the staff team in the administration of hormone injections, emergency epilepsy medication and procedures, and competencies for gastrostomy feeds. The nurses delivering this training are usually the named specialist nurse for the young people. The health care plans and staff training sheets are located in individual care plans.
- 6.3 Larchwood has access to the Occupational Therapist within the Children's Specialist Support Team who provides support in meeting the needs of children and young people requiring manual handling and specialist equipment. The Occupational

Therapist is fully involved in the care plan and risk profiles of those children and young people.

- 6.4 The unit is able to provide a service for and assist children/young people who are prescribed medication, for which there is a 'Larchwood Safe Administration of Children's Medication Policy and Practice Guidance'. Children and young people who have complex health needs are able to access the service with prior agreement of the Primary Care Trust. It is the responsibility of the Trust and the Unit Manager to ensure a suitably qualified nurse is available to support that young person whilst in the unit. Currently there are no children at Larchwood needing this service. Staff are all aware of the need to promote healthy living, and actively assist children and young people in daily hygiene routines, dental care, food and menu choices. Health is also explored through play, stories and activities.

7 POSITIVE RELATIONSHIPS

Promoting contact between children, families and friends

- 7.1 Larchwood is a Short Break Unit, therefore the aim is to provide children with enjoyable short breaks whilst also giving their families a break – this in itself assist with family relationships and resilience.
- 7.2 Parents are welcome to contact Larchwood at any time during their child's visit. No child or young person can be collected by a person not known to Larchwood staff without prior authorisation from the family and evidence of identity.
- 7.3 Larchwood operates an "open door" visiting policy, and, subject to any legal orders, contact can be made with a child/young person at any time during their stay. As many of our activities include outings outside of the unit, parents and carers are advised to notify staff beforehand if they are intending to visit, in order to ensure the child/young person is in the unit.
- 7.4 Children and young people are able to call their families at any time and staff will support this if necessary.

8 PROTECTION OF CHILDREN

Homes approach to monitoring and surveillance

- 8.1 Occasionally, Larchwood has children with health needs that require observation and are monitored during the night using an audio monitor. When this is identified as an assessed need agreement is sought from parents, wherever possible the child/young person, the placing authority and a consent form is signed. The Child or Young Person is made aware when the monitor is switched on and off each time using words, Makaton or symbols as appropriate for them.
- 8.2 The children and young people at Larchwood are provided with support including that of supervision based on their assessed individual needs and as identified in their needs profiles on ratios such as group based, 1:1 or 1:2. The unit is designed so that children and young people can have access to all shared areas of the home, enabling independence and privacy where safe to do so.

- 8.3 The unit has an electronic door alarm on all external doors and key pad exit systems on all 3 external doors that lead to the car park and busy main road. There is unrestricted access to a large garden / play area.
- 8.4 Young people are free to leave / go out at anytime and they have a variety of communication methods available to them to be able to ask a member of staff if they want to go on an outside activity or to be picked up by a parent/carer.
- 8.5 These measures are designed to enhance the children/young person's safety, whilst taking into account issues surrounding deprivation of liberty, enabling free access within the home and its communal areas. These identified risks are reflected in the building risk assessment.
- 8.6 Larchwood staff are aware of the procedures and protocols in place with regard to children who go missing and who may be at risk of child sexual exploitation. A location risk assessment has been undertaken and there are no known risk associated with the location of the unit.

Behavioural support

- 8.7 Larchwood operates within the Bracknell Forest Council Behaviour Management Policy Statement and Guidance. All staff receive training (Team Teach) every two years. The children/young people's care plans are updated every six months and agreed and signed off by parents/carers. Their risk profiles are also reviewed and updated every six months, and more frequently if required, and involve wider multi professional input and agreement. These risk profiles are carried out in conjunction with parents/carers, education, placing social worker and other identified professionals such as occupational therapist where necessary.
- 8.8 The Policy has a strong emphasis on preventative strategies and partnership and the unit liaises closely with the families, the Short Breaks Behaviour Support Specialist and other relevant professionals to look at specific behaviours, and identify the most appropriate way to support children and young people with a range of emotions and behaviours.

Team Teach Aims:

- To promote the least intrusive positive handling strategy and a continuum of gradual and graded techniques, with an emphasis and preference for the use of verbal, non-verbal de-escalation strategies being used and exhausted before positive handling strategies are utilised.
- To enable services to develop acceptable and authorised responses to disruptive, disturbing, angry and aggressive behaviours in a manner that maintains positive relationships and provides safety for all, by training in Team-Teach.
- To reduce the amount of serious incidents involving physical controls in all settings and to emphasise the importance of exhausting behaviour management strategies in the first instance.
- To increase the awareness of staff concerning the importance of recording and reporting, monitoring and evaluating, all incidents involving positive handling.
- To provide a process of repair and reflection for both staff and children.

- 8.9 Support workers at Larchwood will always try to divert the children/young people from behaviour that is unacceptable, using methods agreed in individual care plans and risk profiles. They focus on positive reinforcement, modelling appropriate behaviour and redirection/distraction strategies.
- 8.10 At all times workers are mindful of the need to ensure that the behaviour of one child does not harm another. A distressed young person may be supported by withdrawing them from the group to enable a time for calming down.
- 8.11 The refresher training at a minimum of every two years (as recognised by Team Teach standards) by an external trainer in “Team Teach” re-assesses each individual’s competencies whilst providing opportunities for individual case discussion and a refresher in techniques.
- 8.12 Should any child or young person need any type of physical intervention it is recorded in the physical interventions book, and on their electronic file which alerts their social worker. Parents/carers are notified as soon as practicable and appropriate. Support workers are required to record the young person’s response / views in the physical intervention log, and any impact.
- 8.13 The use of restraint at Larchwood is very rare and detailed records are monitored by the managers at Larchwood, and through the monthly Regulation 44 visits and by the responsible individual (Head of Service).
- 8.14 We promote positive behaviour and our aim is to assist children and young people in restorative conciliatory responses when undesirable behaviours occur. Occasionally it may be appropriate to use a sanction. A child/ young person should be given a warning of an impending sanction and opportunity to alter their behaviour. Sanctions will only be used where it has been clearly identified and agreed in an individual’s care plan and risk profile agreeing that the child/young person has the capacity to understand consequences. The sanctions record book should be completed in full.
- 8.15 A copy of the Bracknell Forest Council’s Behaviour Management Policy Statement and Guidance is available upon request from Larchwood.

9 LEADERSHIP AND MANAGEMENT

Names and work addresses of managers

Registered Provider

Bracknell Forest Council
Department of Children, Young People and Learning
C/O Time Square Market Street
Bracknell
RG12 1JD

Responsible Individual

Sonia Johnson, Head of Specialist Support
Time Square
Market Street
Bracknell
RG12 1JD

Telephone 01344 353132
sonia.johnson@bracknell-forest.gov.uk

Registered Manager

Samantha Whitehouse
Larchwood
10 Portman Close
Bracknell
RG42 1NE
Telephone 01344 452315
samantha.whitehouse@bracknell-forest.gov.uk

10 STAFF EXPERIENCE AND QUALIFICATIONS

10.1 The Responsible Individual - The quality and delivery of safe service is overseen by the Responsible Individual, who is a Qualified Social Worker with over 20 years experience in Social care. This includes holding a number of Registered Manager positions and extensive experience in child protection field work.

10.2 The Team Manager, Children's Specialist Support, is responsible for the supervision of the Registered Manager and is accountable along with the Registered Manager for ensuring that a high standard of care is maintained within the unit, and that the unit's resources are effectively deployed within budget.

The Team Manager's Qualifications are:

- Diploma in Social Work
- Diploma in Learning Disability Nursing
- BA (hons) Health & Social Care Studies

Experience: Extensive experience of team management.

10.3 The Registered Manager is responsible for the day to day operational management of the unit.

The Registered Manager's Qualifications are:

- Level 5 Certificate in Leadership Management
- Level 4 Managers in Residential Childcare
- NVQ 4 in Management
- NVQ 3 in Caring for Children and Young People
- BTEC National Diploma in Nursery Nursing

Experience: Extensive experience of managing a respite setting and the team within many years of working with disabled children and children's social care.

10.4 The Senior Residential Practitioner supports the Registered Manager and has the following qualifications:

- Post Graduate Certificate in Education (secondary) with QTS
- Practice Teaching Award

- Diploma in Counselling
- N.V,Q.4 in Management.

Experience: Extensive experience of working with both disabled and mainstream children and young people in education, respite and residential settings

10.5 Qualifications among our staff team include:

- N.V.Q. Level 3 Social Care
- Team Teach qualifications
- Qualification for driving the mini bus.
- Makaton
- Epilepsy

10.6 Experience amongst our staff team includes:

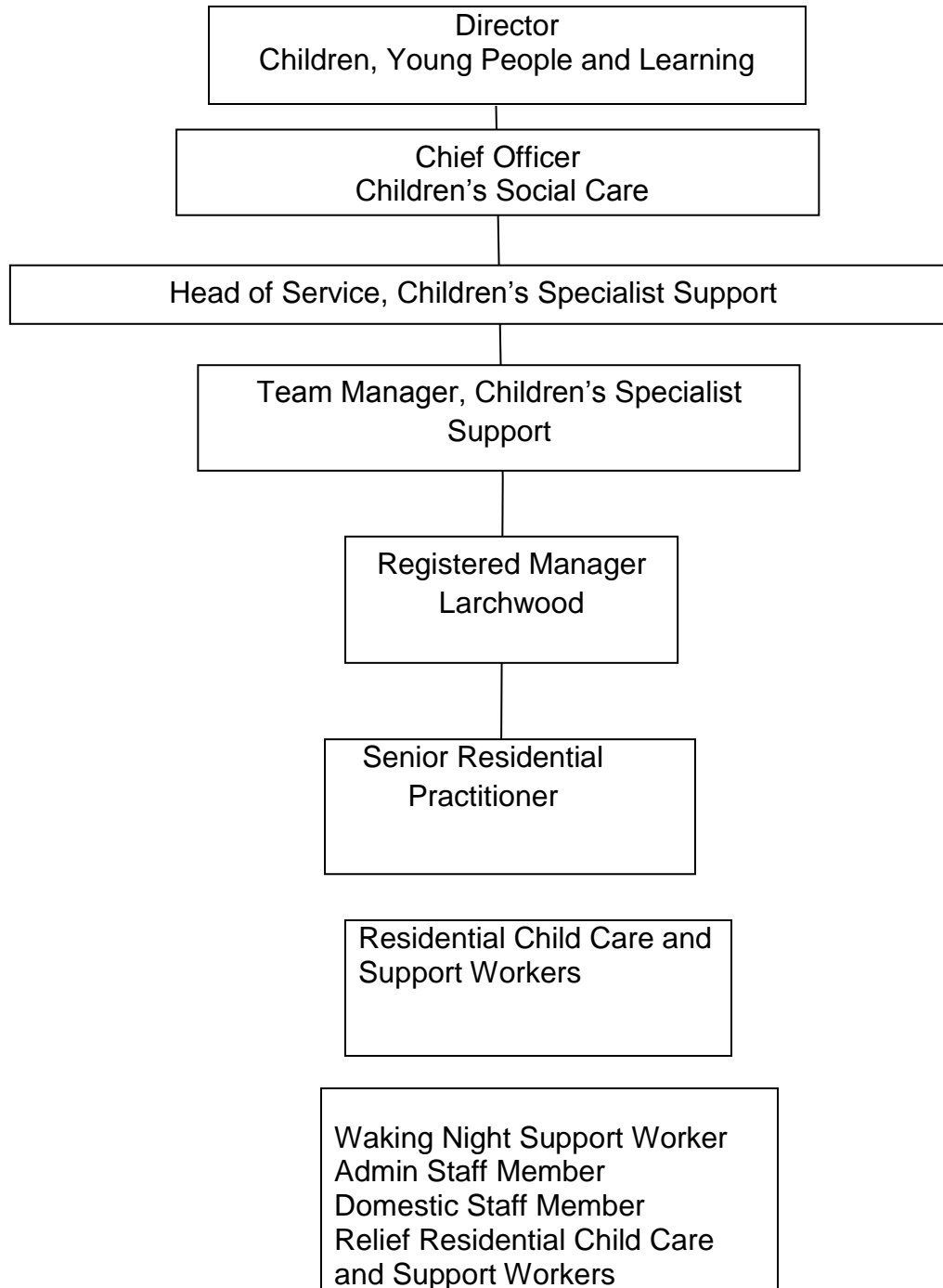
- Mental health awareness
- Knowledge of the Webster Stratton Parenting Course and how to support families to implement the strategies.
- Supporting adults with learning disabilities in their own and group homes to live more independently.
- Extensive experience of working with adults with disabilities in a residential setting.
- Youth work
- Experience in managing challenging behaviours within residential home/school settings

10.7 The Larchwood team is rich with experience of working with children with disabilities and has a proven track record evidenced through Ofsted Inspection of providing services that are of significant value to children / young people and their families.

10.8 Currently there is no requirement for commissioned staff to provide education or health services to the young people.

Staffing structure

10.9 The Leadership Team recognise that staff supervision is an essential component of good quality services. All staff receive supervision in accordance with the Children's Homes Regulations 2015 and within Bracknell Forest Council's Supervision Policy. We use a variety of formats, including team supervision, team meetings and where appropriate, learning events. Staff are provided with individual, direct 1:1 supervision which incorporates reflective practice from the Unit Manager or the Senior Practitioner on a monthly basis. There is an annual appraisal system in place to ensure personal and professional development. Relief staff are supervised regularly by a full time employed Residential Child Care and Support Worker.



Promoting appropriate role models within the home

- 10.10 Larchwood currently has an all female staff group. At present, all six staff are female with one vacant post of 20hrs which will be recruited to in due course. The Unit uses a regular male staff member from a care agency who knows the young people well. We will continue to source male relief and agency workers and will consider both genders when recruiting to increase the range of appropriate role models within the unit. The current team are of a mixed age, religion and sexuality which provide diversity and difference.
- 10.11 Larchwood has a team of experienced and reliable bank staff that are employed by Bracknell Forest Council. The bank staff are used to support the team with annual leave, sickness and gaps within the rota. We also positively engage some regular agency staff to provide a balance of age, ethnicity and experience to our own team.

11 CARE PLANNING

Admissions to the home

- 11.1 Larchwood is a Bracknell Forest provided unit and therefore a significant number of referrals are from Bracknell Forest Children's Social Care. However the unit has capacity to provide services to a larger population and encourages referrals from other local authorities. We currently deliver services to a number of young people from the Royal Borough of Windsor and Maidenhead.
- 11.2 All children eligible to attend Larchwood will have this identified as a need from a social work assessment. Following assessment and in co-production with the child and their family the child/young person's needs and outcomes will be identified, and a proposed support package developed which may include short break, 'On the Move' or day services from Larchwood.
- 11.3 All referrals are discussed with the Unit Manager, Children's Specialist Support Team Manager and Head of Service as part of the multi professional Resource Allocation System (RAS) Panel. Admission to Larchwood must be approved by the Responsible Individual. Alongside this the unit manager will assess the suitability of the referral and evoke a pre-admission plan to aid decision making. Once a decision has been made that the child or young person's needs can be met at Larchwood, a bespoke introduction to the unit will commence. The level of service will depend upon assessed need (agreed at RAS). If the number of visits is under 75 nights per year and no more than 17 consecutive nights, Regulation 48 and either a section 17 or section 20 (4) will apply. If it exceeds 75 night per year or more than 17 consecutive nights, full LAC requirements will need to be observed. A Social Worker will review individual children's needs regularly.

- 11.4 After a referral is accepted, a link-worker is identified from the Larchwood staff team. He/she then makes contact with the family. The child/young person and his or her family are invited to visit the unit, and the link-worker carries out a home visit and school visit to gather the information necessary to write a care plan and formulate an initial risk profile. Following this, a formal multi professional planning meeting will be held. The care plan, risk profile and other relevant documents are finalised at this meeting and introductory visits arranged.
- 11.5 A Social Worker will review individual children's needs regularly. Packages will be reviewed within the 'Looked After' Child (for children who stay more than 75 nights a year or have multiple placements) or 'Child in Need' review system on a (minimum) six monthly basis.
- 11.6 Larchwood is part of the CSST and shares a commitment with others in supporting children and families known to the CSST service who are in crisis, and require short notice stays, providing they meet Larchwood's criteria for admission it may be possible in some circumstances to offer a service.
- 11.7 To enable Larchwood to consider this, the social worker must have assessed the situation and identified the need and Larchwood must be considered the most appropriate option in meeting the child's needs. This means that options such as the child staying with other family/friends, placement with a foster carer, short break carer, or staff working within the child's home have been explored and ruled out or are not considered to be appropriate. Such decisions will also take account of the impact on other children/young people using the service at Larchwood and consider their needs as well, ensuring that Larchwood can continue to deliver high quality care to all those resident on any particular day /night. (This may include a decision to rearrange or if unavoidable to cancel other children's/young people's visits to help with capacity issues or group mix). Decisions around short notice stays will be the responsibility of the Larchwood Management Team in conjunction with the Social Worker and their Manager. Larchwood must not be considered the first point of call when a family is in crisis, but may in some circumstances offer an appropriate best interest solution if other options are not available to meet need.
- 11.8 Prior to any agreement to a child staying at Larchwood (admission) relevant paperwork (Care Plan including all medical information, Risk Profile and Group Impact Risk Assessments) and introductions will need to be completed / reviewed.
- 11.9 Depending on the nature of the crisis being experienced by the child or their family, introductions to the unit may be over more than one visit and will ideally be conducted at the child's pace unless there is good reason not to. Rapid planning for these types of short notice visits will identify and outline a plan.
- 11.10 It must be noted that Larchwood although registered as a Children's Home is a Short Breaks provision. Although we try to be a 'home away from home' we are geared towards children and young people regularly coming and going. As such Larchwood should not be considered an appropriate resource for stays that could not be considered a Short Break (i.e. no longer than 17 consecutive days).
- 11.11 Where a short notice visit cannot be considered a Short Break by definition of the anticipated length of time or there being no clear plan in place a Placement Planning Meeting will take place within 5 days of admission to consider the young person's best interests. Any stay planned for or exceeding 17 days will be notified to Ofsted,

alongside robust planning to move a child to a permanent placement as soon as is practicable.

NOTE: PACKAGES CAN INCREASE OR DECREASE DEPENDING ON ASSESSED NEED AT THAT TIME

Samantha Whitehouse, Registered Manager
Lou Richer, Team Manager
Sonia Johnson, Responsible Individual
Children's Specialist Support Team, Bracknell Forest Council

March 2017

SUMMARY OF THE STATEMENT OF PURPOSE

Larchwood's Children's Guide

<http://www.bracknell-forest.gov.uk/childrens-guide-to-larchwood.pdf>

A paper format will also be contained within this document